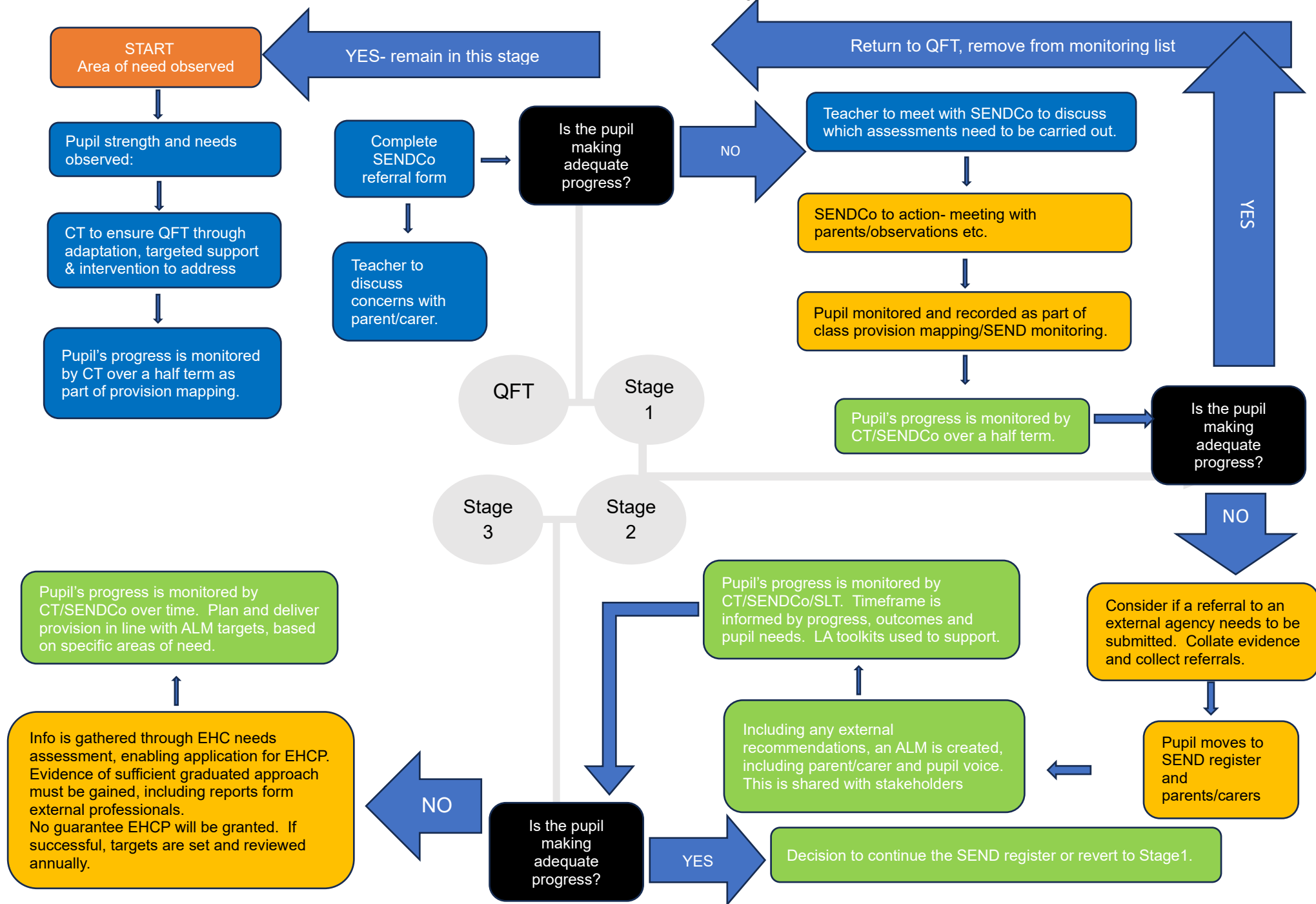


MPA SEND Journey



MPA SEND Journey

Leaders:

- Create/communicate schemes of delegation and align SEND journey to policy.
 - SEND data overview created to strategically plan for SEND provision and identify trends.
 - Monitor the number of pupils being identified.
 - Closely monitor and evaluate QFT, including adaptations and the quality of intervention.
 - Monitor progress rates of all pupils including SEND.
 - Specific 'at risk' pupils identified and monitored in PPM.
 - Ensure CPD pathways for all staff based upon current/upcoming needs.
-
- Monitor/QA provision for SEND pupils.
 - What is the impact of provision over time?
 - How are the staff/resources/funding structured to maximise the impact?
 - Supporting and leading staff to manage needs.
 - CPD for specialist staff
 - Ensure processes for communication/transitions are robust.
-
- Meeting with the SENDCo to identify need/strategically and financially plan for pupils with SEND.
 - Monitor/QA pupil, parent voice and curriculum content, in relation to SEND, including the quality of targets for pupils with additional needs.
 - Continue to monitor/QS all aspects of QFT and interventions both discrete and in class.
 - Ensure processes for communication/transaction are robust.